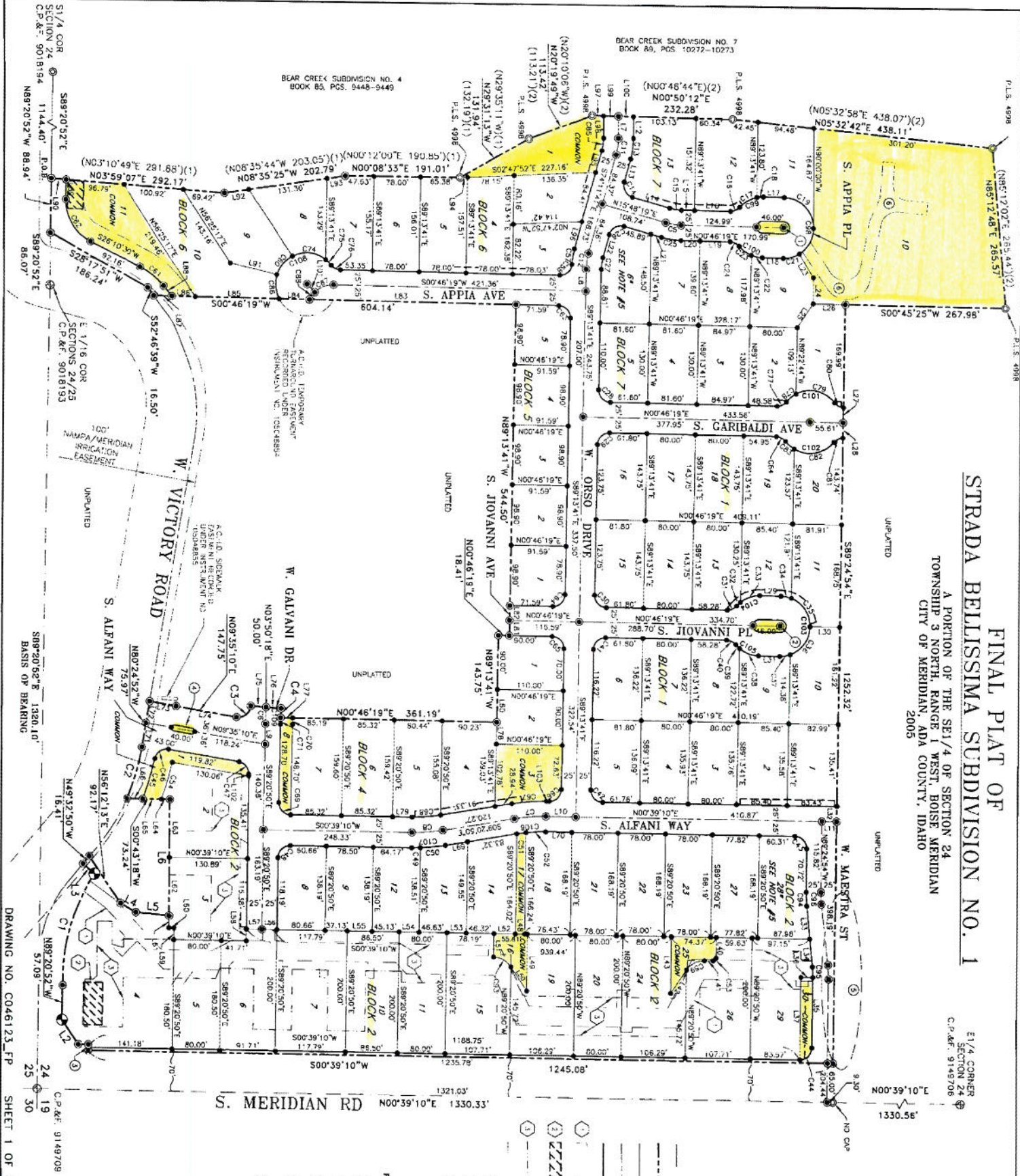


FINAL PLAT OF STRADA BELLISSIMA SUBDIVISION NO. 1

A PORTION OF THE SE 1/4 OF SECTION 24
TOWNSHIP 3 NORTH, RANGE 1 WEST, BOISE MERIDIAN
CITY OF MERIDIAN, ADA COUNTY, IDAHO
2005

E 1/4 CORNER
SECTION 24
C.P. REF. 9149708



LEGEND

- SILICON LINE
- BO. NAVAY LINE
- LOT LINE
- ROAD CENTER LINE
- ROAD RIGHT-OF-WAY
- UTILITY EASEMENT
- ACROSS-ACCESS AND PARKING EASEMENT (SEE NOTE # 4)
- ACID SIGN WATER EASEMENT (SEE NOTE # 5)
- FOUND A UMLINX CAP
- FOUND 5/8" REBAR AS SHOWN
- SET 5/8" X 30" REBAR W/CAP MARKED SRL 1-335
- SET 1/2" X 24" REBAR W/CAP MARKED SRL 11335
- POINT OF BEGINNING
- FOUND GRASS CAP
- FOUND 1/2" X 1/2" X 1/2" WOODEN
- C.M.C. POINT (NOthing SET)
- DETAIL NUMBER
- RECORD DATA, RECORD OF SURVEY AND RECORD OF MERIDIAN, ADA COUNTY, IDAHO, 2005
- RECORD DATA, PLAT OF BLAIR CREEK SUBDIVISION NO. 4
- C.P. REF. 9149708

PROFESSIONAL SEAL
 IDAHO REGISTERED PROFESSIONAL SURVEYOR
 No. 11335
 DATE OF EXPIRATION: 10/1/2006
 STATE OF IDAHO

PINNACLE Engineers, Inc.
 2551 W. Executive Dr., Suite B, Boise, Idaho 83731
 (208) 487-7700

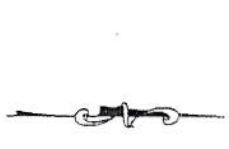
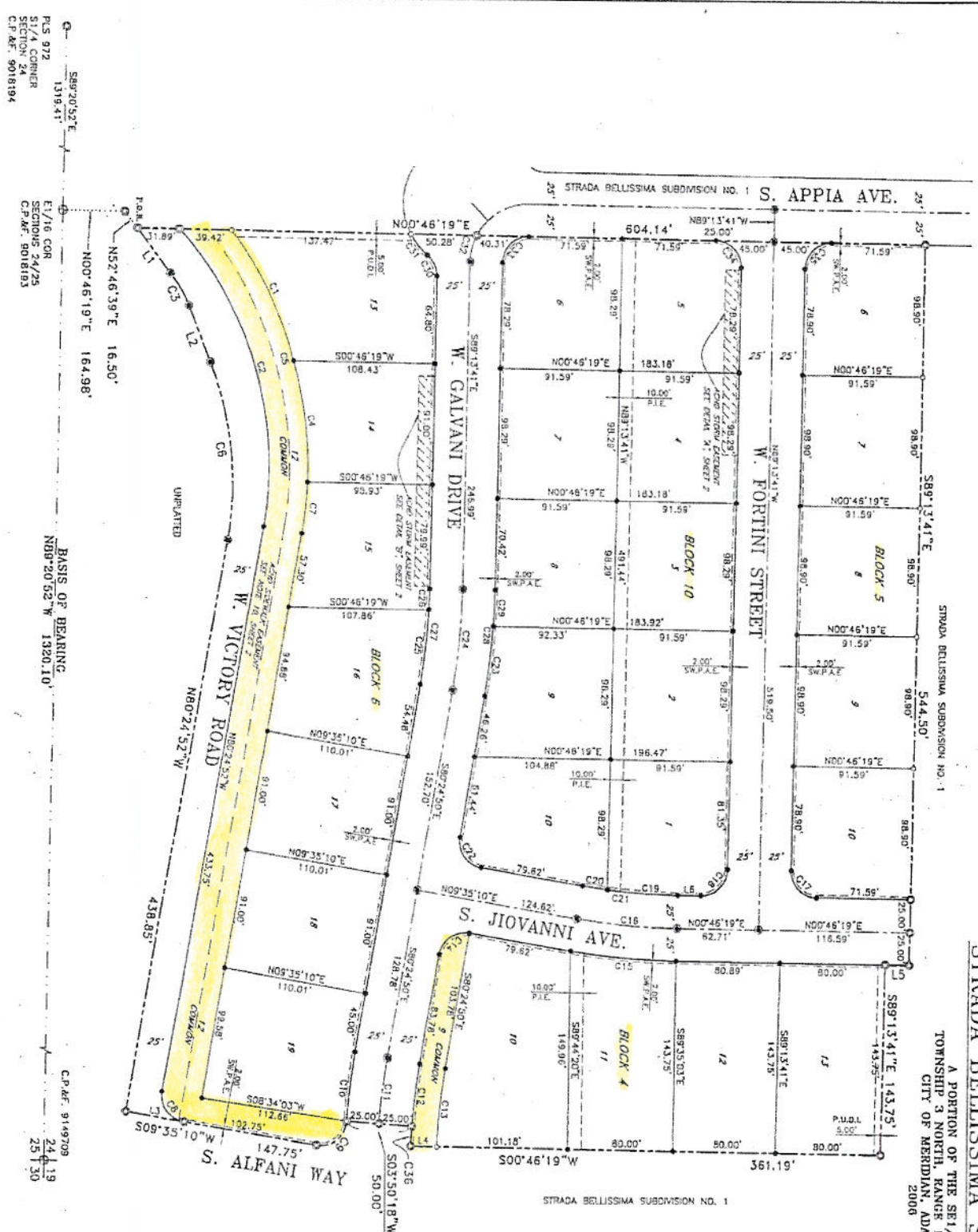
SCALE 1" = 100'

DRAWING NO. C046123_FP SHEET 1 OF 4

BL 95-06-11716

FINAL PLAT OF STRADA BELLISSIMA SUBDIVISION NO. 2

A PORTION OF THE SE1/4 OF SECTION 24
TOWNSHIP 3 NORTH, RANGE 1 WEST, HOSE MERIDIAN
CITY OF MERIDIAN, ADA COUNTY, IDAHO
2006



- LEGEND**
- SECTION LINE
 - BOUNDARY LINE
 - LOT LINE
 - ROAD CENTER LINE
 - ROAD RIGHT-OF-WAY
 - ACHD STRADA EASEMENT (SEE NOTE 9, SHEET 2)
 - SIDEWALK/PATH EASEMENT
 - EASEMENT LINE
 - THE LINE
 - FOUND ALUMINUM CAP
 - FOUND 5/8" REBAR W/CAP MARKED SHL 11333
 - DRILLS OTHERWISE SHOWN
 - FOUND 1/2" REBAR W/CAP MARKED SHL 11333
 - CALCULATED POINT
 - SET 5/8" x 20" REBAR W/CAP MARKED SHL 11320
 - SET 1/2" x 24" REBAR W/CAP MARKED SHL 11320
 - POINT OF BEGINNING
 - FOUND 5/8" REBAR W/CAP MARKED SHL 11333
 - PUBLIC UTILITIES, PLUMBING, & IRRIGATION
 - PRESSURE BRIGADION EASEMENT
 - SIDEWALK/PUBLIC ACCESS EASEMENT SEE NOTE 11, SHEET 1.



SCALE 1" = 50'

PINNACLE
Engineers, Inc.
13327 N. Emerald Dr., Suite B, Boise, Idaho 83713
(209) 867-7100

PG 972
SECTION CORNER
S.P. 1100
C.P. 9016194

NS2°46'19"E 16.50'
N00°46'19"E 164.98'

BASIS OF BEARING
N89°20'52" W 1320.10'

C.P. 9149708
24.19
251.30